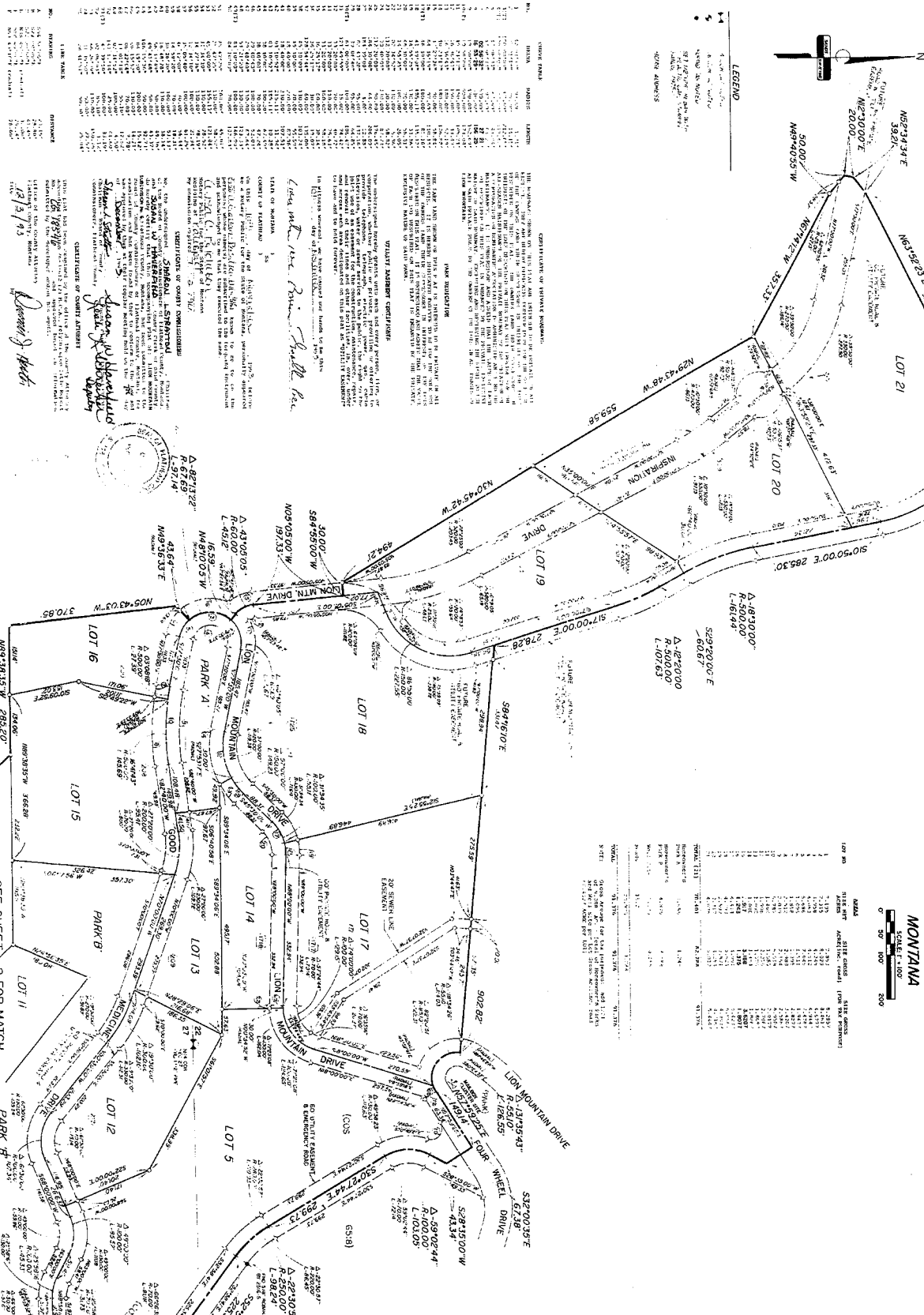
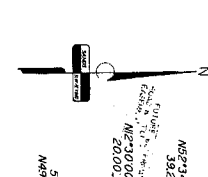


SR SANDS SURVEYING
 400 N. 134th St.
 Madison, WI 53711
 PH (408) 755-6581
 FAX (408) 755-6582
 DATE: AUGUST 24, 1992
 FOR: LION MOUNTAIN INC.

PLAT OF
LION MOUNTAIN SUBDIVISION NO. 6
 IN THE NE1/4NW1/4 & NE1/4 SEC. 27 and SE1/4SW1/4 & SW1/4SE1/4 SEC. 22,
 T.31N. R.22W., PM., M., FLATHEAD COUNTY
 MONTANA



LOT NO.	AREA (AC)	PERCENTAGE OF TOTAL
1	1.13	1.13
2	1.13	1.13
3	1.13	1.13
4	1.13	1.13
5	1.13	1.13
6	1.13	1.13
7	1.13	1.13
8	1.13	1.13
9	1.13	1.13
10	1.13	1.13
11	1.13	1.13
12	1.13	1.13
13	1.13	1.13
14	1.13	1.13
15	1.13	1.13
16	1.13	1.13
17	1.13	1.13
18	1.13	1.13
19	1.13	1.13
20	1.13	1.13
21	1.13	1.13
TOTAL	23.76	100.00

CONSTITUTION OF SERVICE PROGRAM:
 THE UNDERSIGNED, SANDS SURVEYING, INC., a corporation organized under the laws of the State of Wisconsin, do hereby certify that the above and foregoing plat of subdivision is a true and correct copy of the original plat as filed in the office of the Register of Deeds for Flathead County, Montana, on August 24, 1992, and that the same has been duly recorded in the public records of said county, to-wit: in Book 111, Page 111.

WITNESSETH MY HAND AND SEAL OF OFFICE:
 SANDS SURVEYING, INC.
 AUGUST 24, 1992

STATE OF MONTANA
 COUNTY OF FLATHEAD
 I, _____, Clerk of the County, do hereby certify that the above and foregoing plat of subdivision is a true and correct copy of the original plat as filed in the office of the Register of Deeds for Flathead County, Montana, on August 24, 1992, and that the same has been duly recorded in the public records of said county, to-wit: in Book 111, Page 111.

DEED INSTRUMENT:
 This deed instrument was recorded in the public records of Flathead County, Montana, on August 24, 1992, and is hereby certified to be a true and correct copy of the original instrument as filed in the office of the Register of Deeds for Flathead County, Montana, on August 24, 1992, and that the same has been duly recorded in the public records of said county, to-wit: in Book 111, Page 111.

DEED INSTRUMENT:
 This deed instrument was recorded in the public records of Flathead County, Montana, on August 24, 1992, and is hereby certified to be a true and correct copy of the original instrument as filed in the office of the Register of Deeds for Flathead County, Montana, on August 24, 1992, and that the same has been duly recorded in the public records of said county, to-wit: in Book 111, Page 111.

DEED INSTRUMENT:
 This deed instrument was recorded in the public records of Flathead County, Montana, on August 24, 1992, and is hereby certified to be a true and correct copy of the original instrument as filed in the office of the Register of Deeds for Flathead County, Montana, on August 24, 1992, and that the same has been duly recorded in the public records of said county, to-wit: in Book 111, Page 111.

DEED INSTRUMENT:
 This deed instrument was recorded in the public records of Flathead County, Montana, on August 24, 1992, and is hereby certified to be a true and correct copy of the original instrument as filed in the office of the Register of Deeds for Flathead County, Montana, on August 24, 1992, and that the same has been duly recorded in the public records of said county, to-wit: in Book 111, Page 111.

DEED INSTRUMENT:
 This deed instrument was recorded in the public records of Flathead County, Montana, on August 24, 1992, and is hereby certified to be a true and correct copy of the original instrument as filed in the office of the Register of Deeds for Flathead County, Montana, on August 24, 1992, and that the same has been duly recorded in the public records of said county, to-wit: in Book 111, Page 111.

DEED INSTRUMENT:
 This deed instrument was recorded in the public records of Flathead County, Montana, on August 24, 1992, and is hereby certified to be a true and correct copy of the original instrument as filed in the office of the Register of Deeds for Flathead County, Montana, on August 24, 1992, and that the same has been duly recorded in the public records of said county, to-wit: in Book 111, Page 111.

DEED INSTRUMENT:
 This deed instrument was recorded in the public records of Flathead County, Montana, on August 24, 1992, and is hereby certified to be a true and correct copy of the original instrument as filed in the office of the Register of Deeds for Flathead County, Montana, on August 24, 1992, and that the same has been duly recorded in the public records of said county, to-wit: in Book 111, Page 111.

DEED INSTRUMENT:
 This deed instrument was recorded in the public records of Flathead County, Montana, on August 24, 1992, and is hereby certified to be a true and correct copy of the original instrument as filed in the office of the Register of Deeds for Flathead County, Montana, on August 24, 1992, and that the same has been duly recorded in the public records of said county, to-wit: in Book 111, Page 111.

DEED INSTRUMENT:
 This deed instrument was recorded in the public records of Flathead County, Montana, on August 24, 1992, and is hereby certified to be a true and correct copy of the original instrument as filed in the office of the Register of Deeds for Flathead County, Montana, on August 24, 1992, and that the same has been duly recorded in the public records of said county, to-wit: in Book 111, Page 111.

DEED INSTRUMENT:
 This deed instrument was recorded in the public records of Flathead County, Montana, on August 24, 1992, and is hereby certified to be a true and correct copy of the original instrument as filed in the office of the Register of Deeds for Flathead County, Montana, on August 24, 1992, and that the same has been duly recorded in the public records of said county, to-wit: in Book 111, Page 111.

DEED INSTRUMENT:
 This deed instrument was recorded in the public records of Flathead County, Montana, on August 24, 1992, and is hereby certified to be a true and correct copy of the original instrument as filed in the office of the Register of Deeds for Flathead County, Montana, on August 24, 1992, and that the same has been duly recorded in the public records of said county, to-wit: in Book 111, Page 111.

DEED INSTRUMENT:
 This deed instrument was recorded in the public records of Flathead County, Montana, on August 24, 1992, and is hereby certified to be a true and correct copy of the original instrument as filed in the office of the Register of Deeds for Flathead County, Montana, on August 24, 1992, and that the same has been duly recorded in the public records of said county, to-wit: in Book 111, Page 111.

DEED INSTRUMENT:
 This deed instrument was recorded in the public records of Flathead County, Montana, on August 24, 1992, and is hereby certified to be a true and correct copy of the original instrument as filed in the office of the Register of Deeds for Flathead County, Montana, on August 24, 1992, and that the same has been duly recorded in the public records of said county, to-wit: in Book 111, Page 111.

DEED INSTRUMENT:
 This deed instrument was recorded in the public records of Flathead County, Montana, on August 24, 1992, and is hereby certified to be a true and correct copy of the original instrument as filed in the office of the Register of Deeds for Flathead County, Montana, on August 24, 1992, and that the same has been duly recorded in the public records of said county, to-wit: in Book 111, Page 111.