

FOR: LION MOUNTAIN INC  
 R. R. 1  
 WHITEFISH, MONTANA 59943  
 862-5328

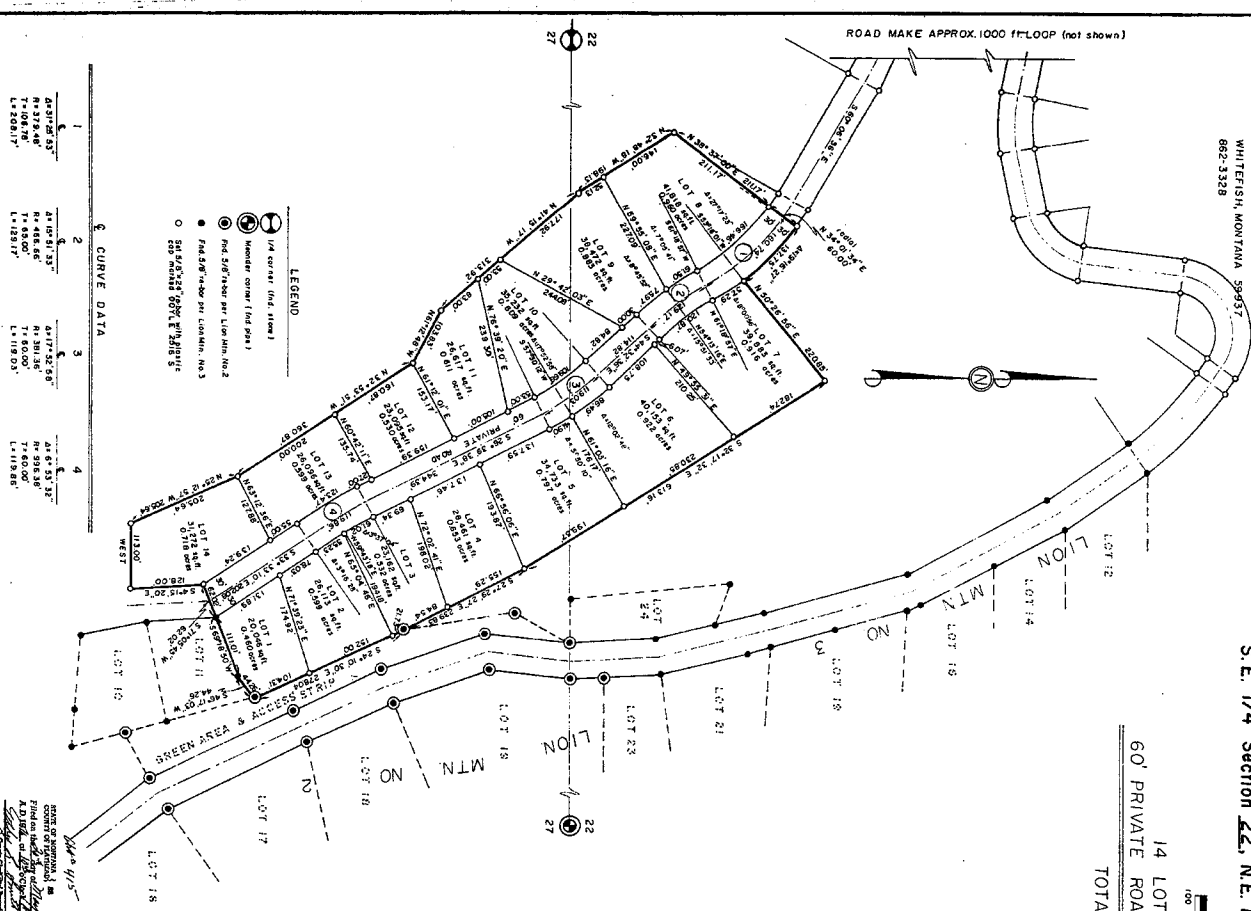
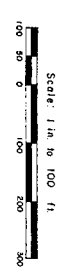
# LION MOUNTAIN SUBDIVISION NO 4

S. E. 1/4 Section 22, N. E. 1/4 Section 27, Township 31 N., Range 22 W., P.M.M.

BY: DOYLE ENTERPRISES INC.  
 285 NORTH MAIN  
 KALISPEL, MONTANA 59901  
 755-6481

DATE: MAY 11, 1976

14 LOTS	435,153 sq ft	9,989 Acres
60' PRIVATE ROAD	72,605 sq ft	1,667 Acres
<b>TOTAL</b>	<b>507,758 sq ft</b>	<b>11,656 Acres</b>



§ CURVE DATA

Station	Curve Data
1	1. R=1171.43
2	1. R=1171.43
3	1. R=1171.43
4	1. R=1171.43

LEGEND  
 (Symbol) 1/4 corner (Ind. 1/4)  
 (Symbol) 1/2 corner (Ind. 1/2)  
 (Symbol) 3/4 corner (Ind. 3/4)  
 (Symbol) 1/4 corner (Ind. 1/4)  
 (Symbol) 1/2 corner (Ind. 1/2)  
 (Symbol) 3/4 corner (Ind. 3/4)  
 (Symbol) 1/4 corner (Ind. 1/4)  
 (Symbol) 1/2 corner (Ind. 1/2)  
 (Symbol) 3/4 corner (Ind. 3/4)

### CERTIFICATE OF EXAMINING LAND SURVEYOR

STATE OF MONTANA ) SS  
 COUNTY OF FLEISHBO )  
 I, James H. [Signature], Examining Land Surveyor of Flathead County, Montana, do hereby certify that the foregoing plat, map, and data were prepared by me and approved by me on this 11th day of May, 1976.

### CERTIFICATE OF COUNTY ATTORNEY

STATE OF MONTANA ) SS  
 COUNTY OF FLEISHBO )  
 I, James H. [Signature], County Attorney for the County of Flathead, Montana, do hereby certify that the foregoing plat, map, and data were prepared by me and approved by me on this 11th day of May, 1976.

### CERTIFICATE OF SURVEYOR

STATE OF MONTANA ) SS  
 COUNTY OF FLEISHBO )  
 I, James H. [Signature], Professional Land Surveyor, Montana License No. 21355, do hereby certify that the foregoing plat, map, and data were prepared by me and approved by me on this 11th day of May, 1976. I am a duly licensed and qualified surveyor under the laws of the State of Montana and am duly sworn to the truth and accuracy of the foregoing plat, map, and data. I am duly sworn to the truth and accuracy of the foregoing plat, map, and data. I am duly sworn to the truth and accuracy of the foregoing plat, map, and data.

### CERTIFICATE OF DEDICATION

By the property owners of the land as described in this certificate of dedication, do hereby certify that we have agreed that the land as described in this certificate of dedication shall be dedicated to the public use of the State of Montana and shall be known as 60' Private Road. The land as described in this certificate of dedication is shown on the attached plat, map, and data. The land as described in this certificate of dedication is shown on the attached plat, map, and data. The land as described in this certificate of dedication is shown on the attached plat, map, and data.

### CERTIFICATE OF COUNTY COMMISSIONERS

STATE OF MONTANA ) SS  
 COUNTY OF FLEISHBO )  
 We, the undersigned as a body, Chairman of the Board of County Commissioners of Flathead County, Montana, do hereby certify that the foregoing plat, map, and data were prepared by me and approved by me on this 11th day of May, 1976. We are duly sworn to the truth and accuracy of the foregoing plat, map, and data. We are duly sworn to the truth and accuracy of the foregoing plat, map, and data. We are duly sworn to the truth and accuracy of the foregoing plat, map, and data.

### CERTIFICATE WAIVING PARK LAND IN LIEU OF A PLANNED UNIT DEVELOPMENT

STATE OF MONTANA ) SS  
 COUNTY OF FLEISHBO )  
 I, James H. [Signature], County Clerk and Recorder of Flathead County, Montana, do hereby certify that the foregoing plat, map, and data were prepared by me and approved by me on this 11th day of May, 1976. I am a duly licensed and qualified clerk and recorder under the laws of the State of Montana and am duly sworn to the truth and accuracy of the foregoing plat, map, and data. I am duly sworn to the truth and accuracy of the foregoing plat, map, and data. I am duly sworn to the truth and accuracy of the foregoing plat, map, and data.

### CERTIFICATE OF PRIVATE ROADS

STATE OF MONTANA ) SS  
 COUNTY OF FLEISHBO )  
 I, James H. [Signature], County Clerk and Recorder of Flathead County, Montana, do hereby certify that the foregoing plat, map, and data were prepared by me and approved by me on this 11th day of May, 1976. I am a duly licensed and qualified clerk and recorder under the laws of the State of Montana and am duly sworn to the truth and accuracy of the foregoing plat, map, and data. I am duly sworn to the truth and accuracy of the foregoing plat, map, and data. I am duly sworn to the truth and accuracy of the foregoing plat, map, and data.